

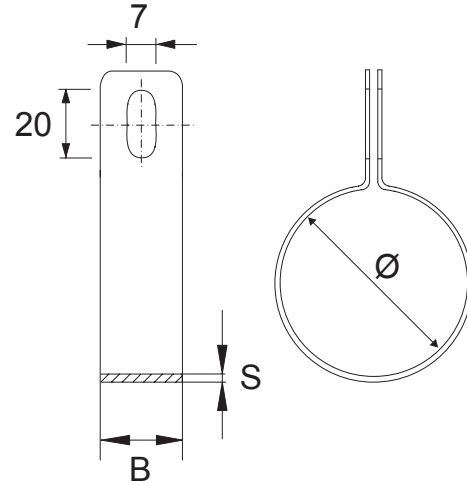


Strap Clamp

Pipe Support

Technical Features

- **Sizes:** Nominal sizes from $\frac{3}{8}$ " to 4" to accommodate pipe diameters from 17,2 mm to 114,3 mm.
- **Finish:** Electro Zinc Plated.



Strap Clamp

Physical Data

Reference	Nominal Pipe Size		Pipe Diameter Ø (mm)	B x S (mm)	Box Qty.	Weight (x1) (kg / lbs)
	Metric	inch				
574010	DN10	$\frac{3}{8}$ "	17,2		100	
574020	DN15	$\frac{1}{2}$ "	21,3		100	
574030	DN20	$\frac{3}{4}$ "	26,9		100	
574040	DN25	1"	33,7		100	
574050	DN32	$1\frac{1}{4}$ "	42,4		100	
574060	DN40	$1\frac{1}{2}$ "	48,3		100	
574070	DN50	2"	60,3		50	
574080	DN65	$2\frac{1}{2}$ "	76,1		50	
574090	DN80	3"	88,9		1	
574100	110 mm	-	110		1	
574110	DN100	4"	114,3		1	